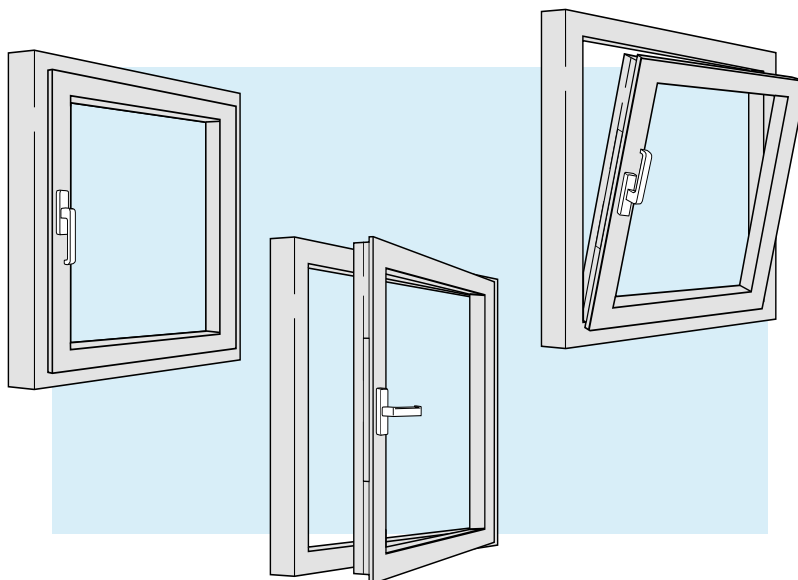
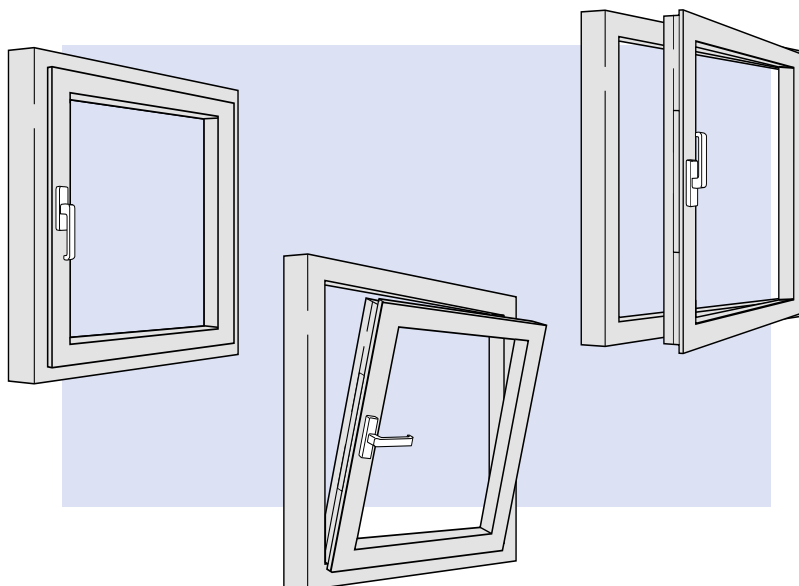


# Bedieningshandleiding ALU instructions d'utilisation ALU

## Draai kiep (DK) / oscillo-battant (DK)

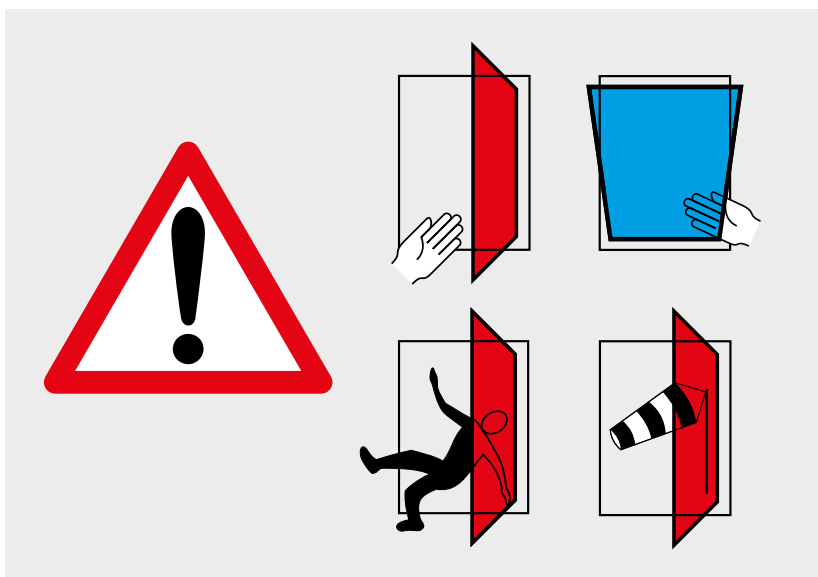
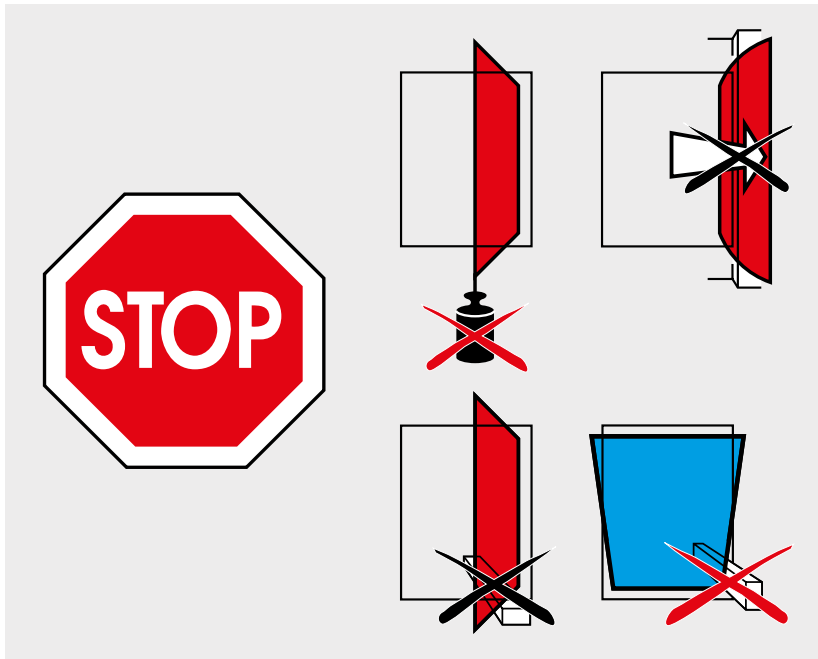


## Kiep draai (TBT) / OB logique (TBT)



## Inhoudsopgave / table des matières

Toepassingsbereiken / champs d'application .....	1
Veiligheidstips / consignes de sécurité .....	2
Bedieningsvolgorde draai kiep / ordre de manœuvre oscillo-battante .....	3
Draai kiep foutbediening corrigeren / correction de position oscillo-battante .....	4
Bedieningsvolgorde kiep draai / ordre de manœuvre OB logique .....	5
kiep draai foutbediening aanpassen / correction de position OB logique .....	6



### ⚠ WAARSCHUWING

**Opgelet, gevaar voor verwonding bij functionele storing!**

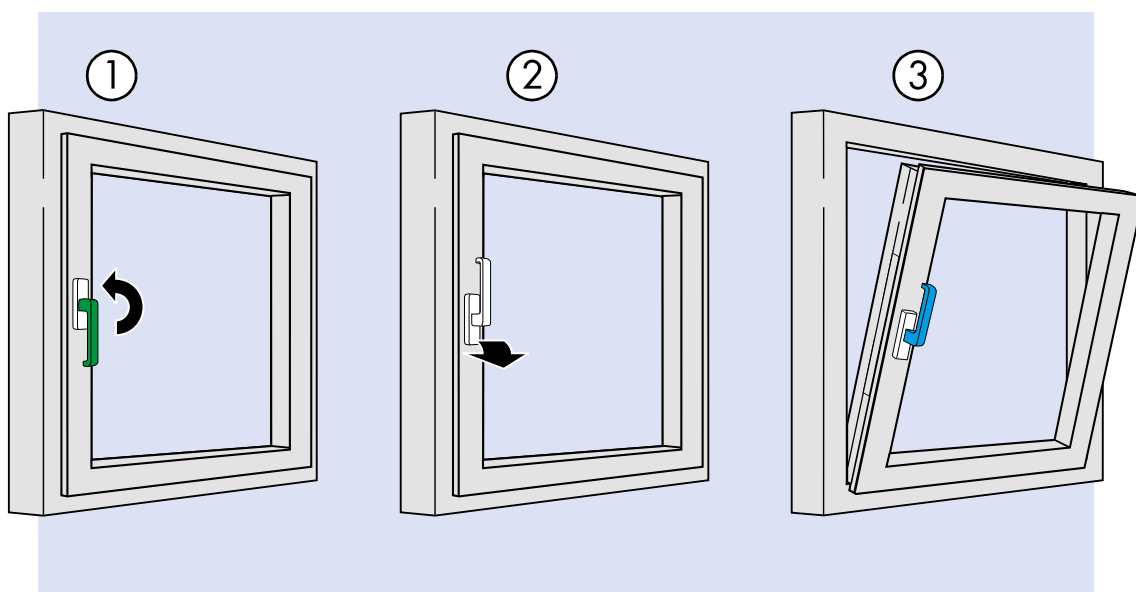
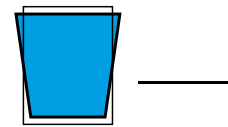
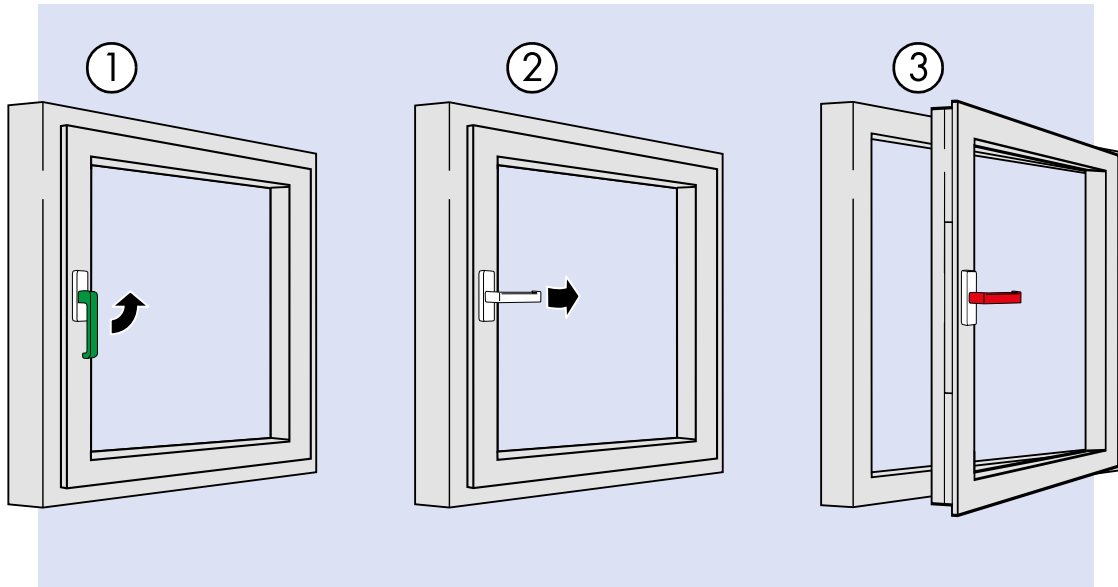
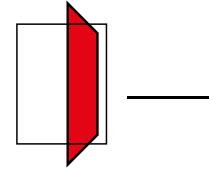
⇒ Het raam niet verder bedienen, maar borgen en onmiddellijk laten herstellen door een deskundig bedrijf.

### ⚠ Avertissement

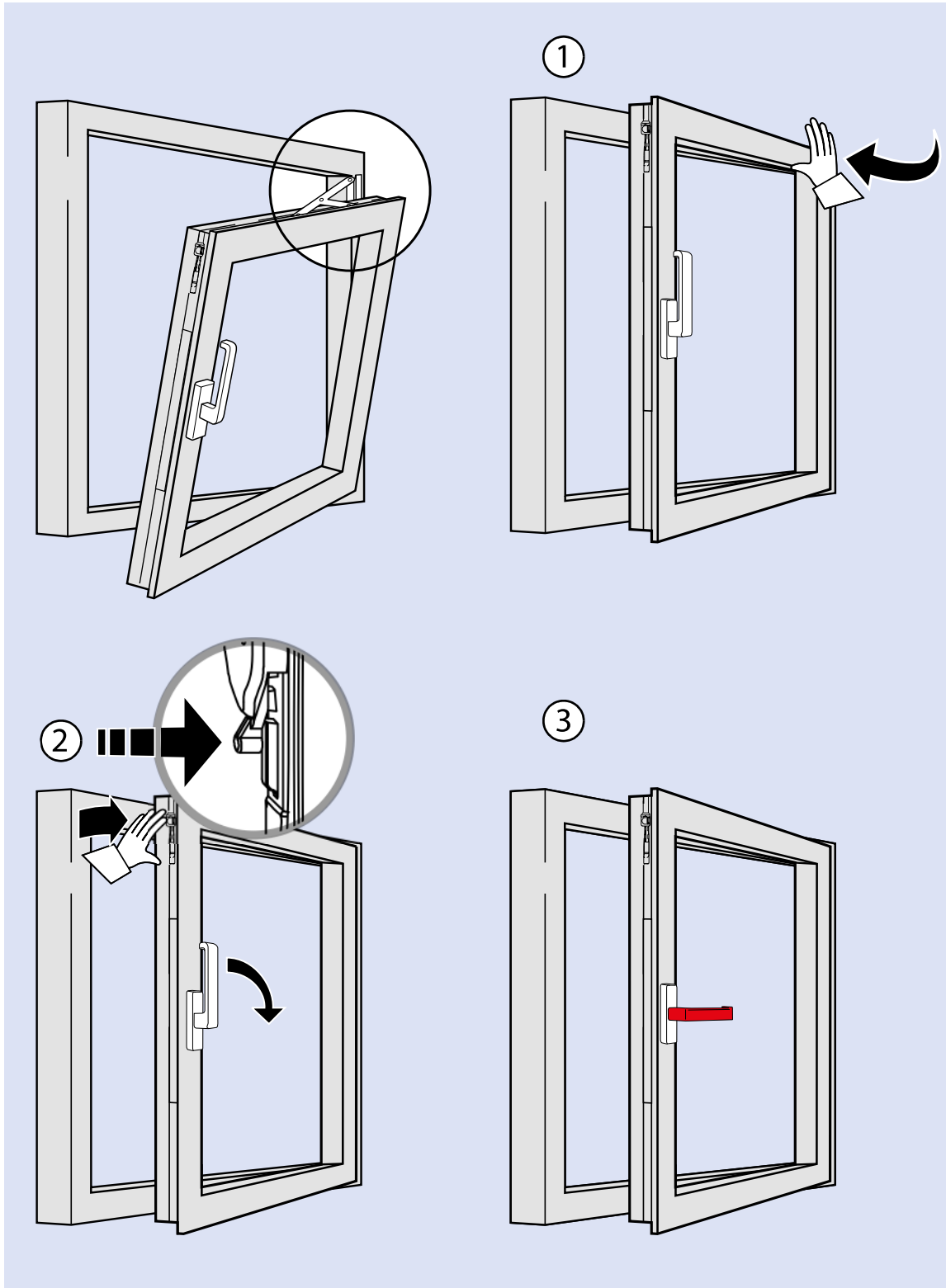
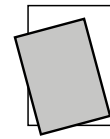
**Danger d'accident lors de dysfonctionnement!**

⇒ Ne pas continuer à utiliser la fenêtre, mais la condamner et la faire remettre en état par un menuisier.

## Bedieningsvolgorde draai kiep

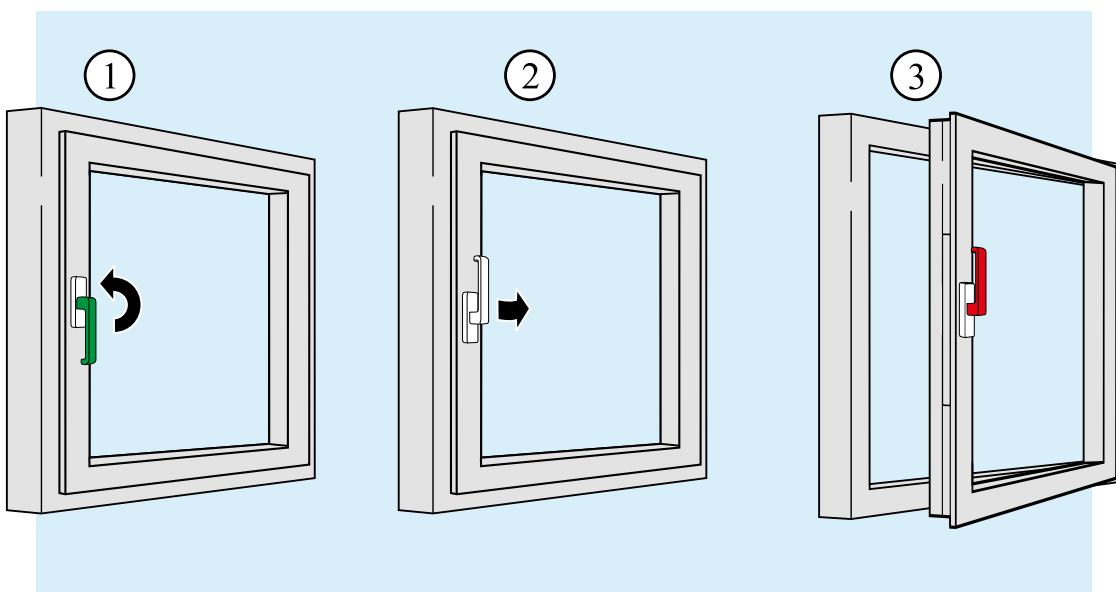
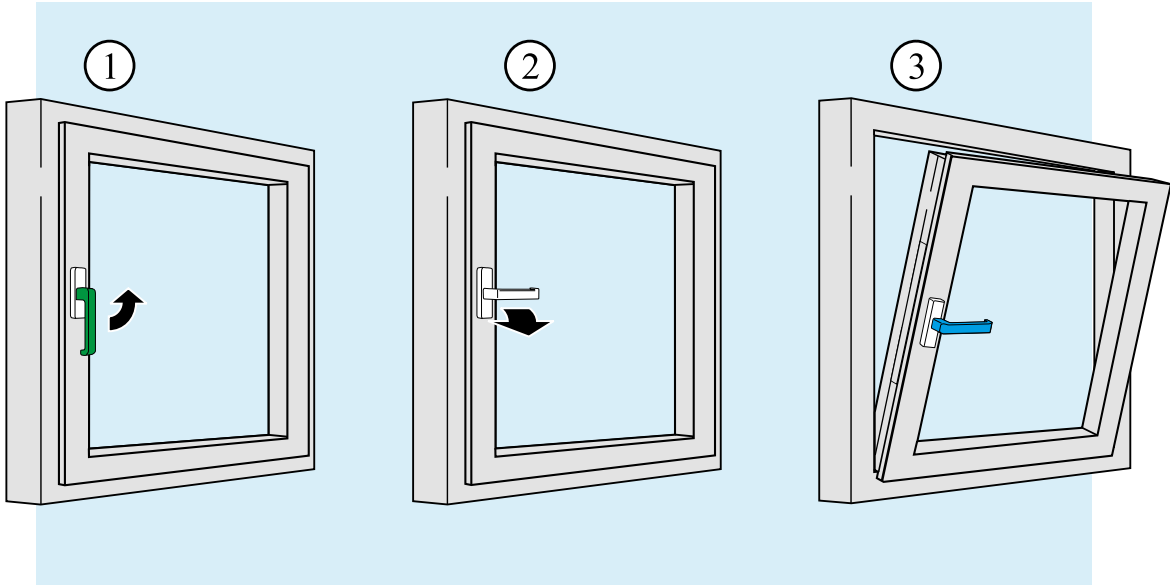
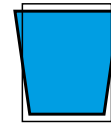


Bedieningsvolgorde draai kiep

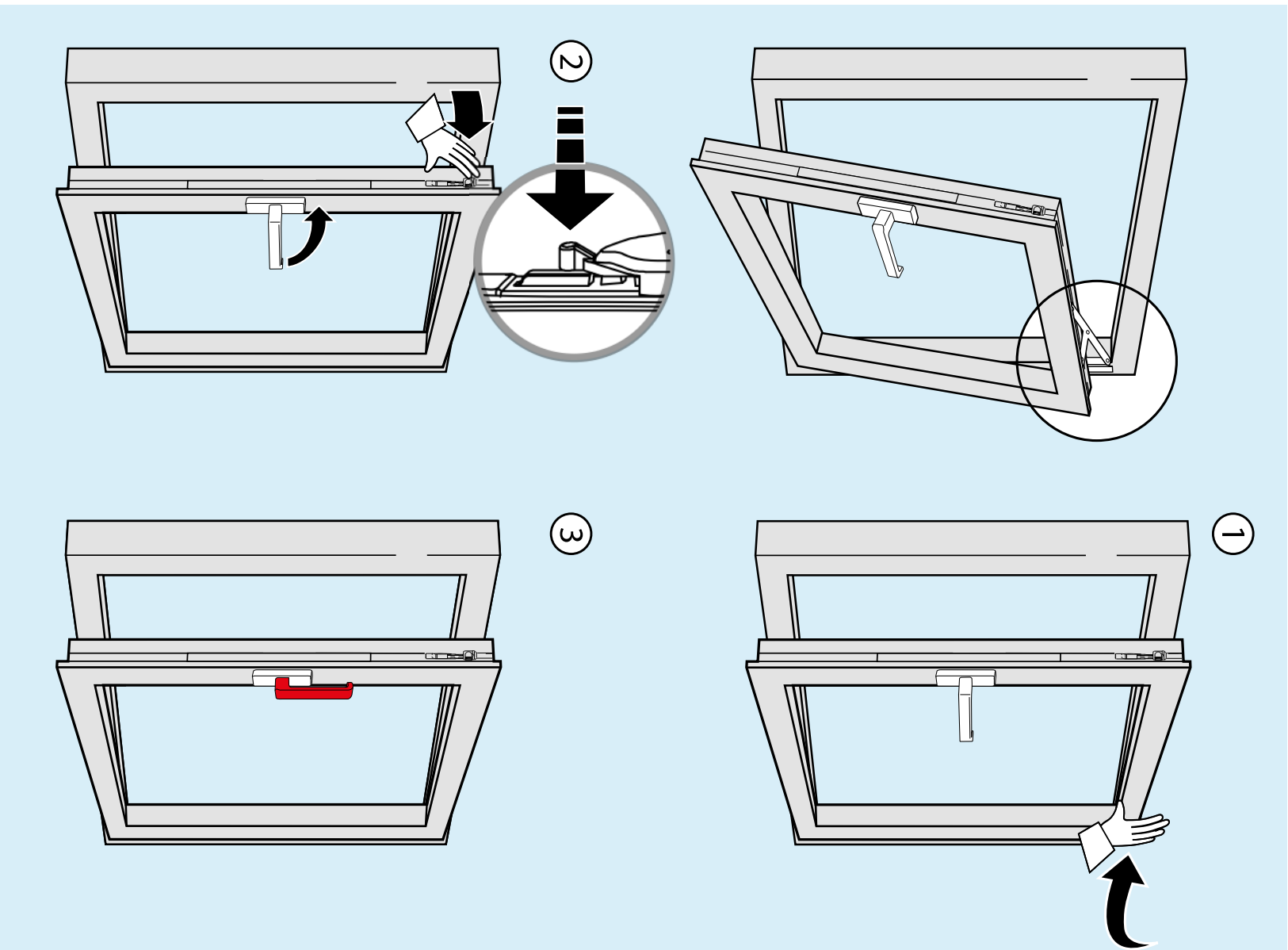
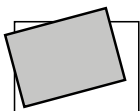


Draai kiep foutbediening corrigeren

Bedieningsvolgorde kiep voor draai



Bedieningsvolgorde kiep voor draai



Kiep voor draai fouthbediening corrigeren